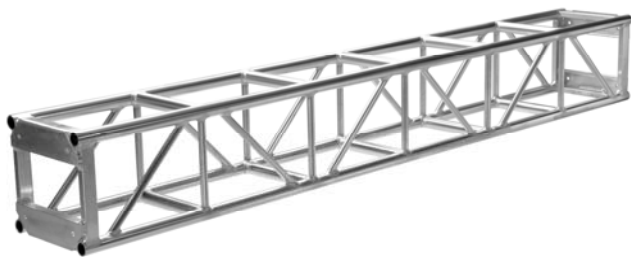




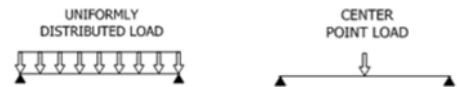
FEATURES

- Highly Polished Aluminum Tubing
- 1.9" OD 6061-T6 Aluminum Tube Schd #40
- 0.145" Wall Thickness
- 1.05" OD Aluminum Bracing
- Fabricated By Certified Welders
- Custom Lengths & Corners Available
- Available With Steel Spigots
- Powder Coating Available

Applied Electronics 16" x 16" truss is manufactured with schedule 40, 1.9" OD x 0.145" wall main chords and 1.05" OD x 0.125" wall diagonal bracing. All components are 6061T6 aluminum tubing and 5/8" grade 8 bolts are included for assembly of the truss elements. 16" box truss, combined with the matching corner blocks, can be used to construct a grid.



PLATED ALLOWABLE LOAD DATA



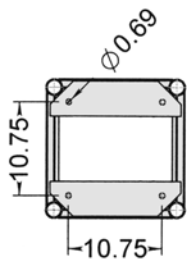
SPAN (ft.)	LOAD (#/ft.)	LOAD (#)	MAX. DEFL. (in.)	LOAD (#)	MAX. DEFL. (in.)
10	480	4800	0.150	2500	0.140
20	180	3600	0.732	1570	0.616
30	70	2100	1.350	1120	1.210
40	32	1280	2.280	665	2.020
50	16	800	3.400	460	3.200

Connection: 5/8" Dia. x 2" Grade 8 Bolts

Weight Load Certified By Structural Engineer ****SINGLE USE****

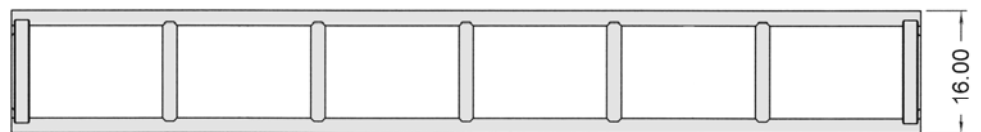
ORDERING INFORMATION

Item No.	Dimensions	Weight
9-16-120	16" x 16" x 10'	70 lbs.
9-16-096	16" x 16" x 8'	58 lbs.
9-16-060	16" x 16" x 5'	45 lbs.
9-16-030	16" x 16" x 2.5'	28 lbs.
9-16-004	4-Way Corner	45 lbs.
9-16-005	5-Way Corner	50 lbs.

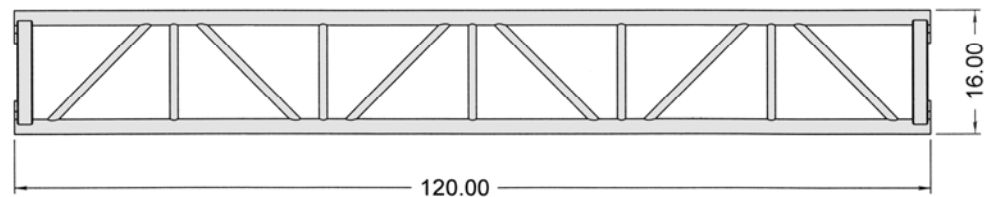


Front View

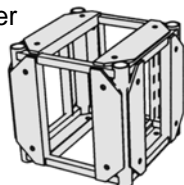
Top View



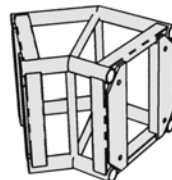
Side View



Standard Corner



Custom Corner



Hinge

