



FEATURES

- Highly Polished Aluminum Tubing
- 1.9" OD 6061-T6 Aluminum Tube Schd #40
- 0.145" Wall Thickness
- 1.05" OD Aluminum Bracing
- Fabricated By Certified Welders
- Custom Lengths & Corners Available
- Available With Steel Spigots
- Powder Coating Available

Applied Electronics Ballroom truss is manufactured with schedule 40, 1.9" OD x 0.145" wall main chords and 1.05" OD x 0.125" wall diagonal bracing. All components are 6061-T6 aluminum tubing and 5/8" grade 8 bolts are included for assembly of the truss elements. The 18" width increases the load rating and allows two lamp bars to be rigged back to back.



PLATED ALLOWABLE LOAD DATA

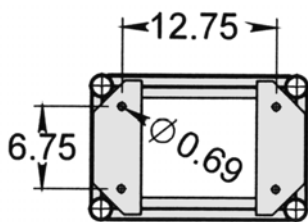
SPAN (ft.)	UNIFORMLY DISTRIBUTED LOAD			CENTER POINT LOAD	
	LOAD (#/ft.)	LOAD (#)	MAX. DEFL. (in.)	LOAD (#)	MAX. DEFL. (in.)
10	320	3200	0.181	1600	0.194
20	100	2000	0.790	870	0.614
30	40	1200	1.570	770	1.560
40	19	760	2.780	380	2.310

Connection: 5/8" Dia. x 2" Grade 8 Bolts

Weight Load Certified By Structural Engineer

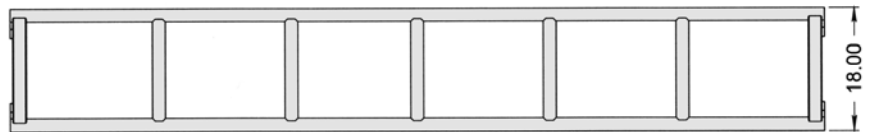
ORDERING INFORMATION

Item No.	Dimensions	Weight
9-04-120	18" x 12" x 10'	70 lbs.
9-04-096	18" x 12" x 8'	56 lbs.
9-04-060	18" x 12" x 5'	45 lbs.
9-04-030	18" x 12" x 2.5'	25 lbs. est
9-04-004	4-Way Corner	23 lbs.

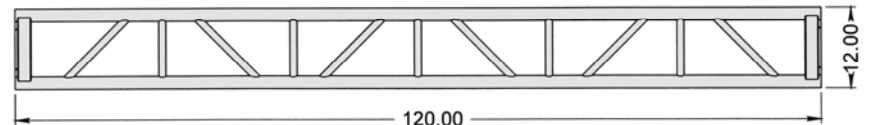


Front View

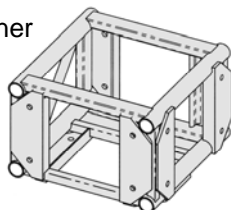
Top View



Side View



Standard Corner



Custom Corner

