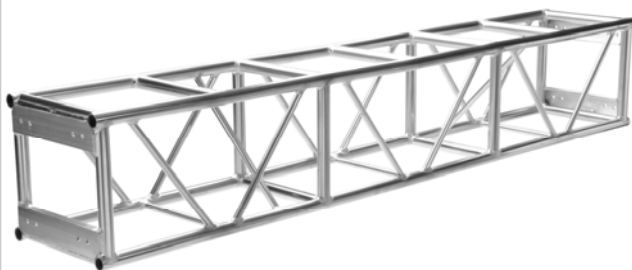




FEATURES

- Highly Polished Aluminum Tubing
- 1.9" OD 6061-T6 Aluminum Tube Schd #40
- 0.145" Wall Thickness
- 1.05" OD Aluminum Bracing
- Fabricated By Certified Welders
- Custom Lengths & Corners Available
- Available With Steel Spigots
- Powder Coating Available

Applied Electronics 20.5" x 20.5" truss is manufactured with schedule 40, 1.9" OD x 0.145" wall main chords and 1.05" OD x 0.125" wall diagonal bracing. All components are 6061-T6 aluminum tubing, and 5/8" grade 8 bolts are included for assembly of the truss elements. Applied 20.5" x 20.5" is suitable for the majority of lighting applications, flying P.A. and it can be used with GS Towers. This truss can also be supplied with casters.



PLATED ALLOWABLE LOAD DATA

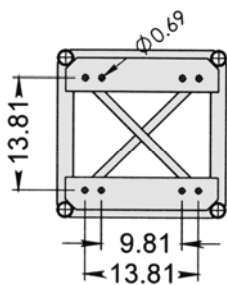
SPAN (ft.)	UNIFORMLY DISTRIBUTED LOAD			CENTER POINT LOAD	
	LOAD (#/ft.)	LOAD (#)	MAX. DEFL. (in.)	LOAD (#)	MAX. DEFL. (in.)
10	687	6870	0.056	6245	0.081
20	307	6140	0.405	3069	0.328
30	132	3960	0.915	1986	0.749
40	71	2840	1.638	1427	1.355
50	43	2150	2.583	1078	2.164

Connection: 5/8" Dia. x 2" Grade 8 Bolts

Weight Load Certified By Structural Engineer

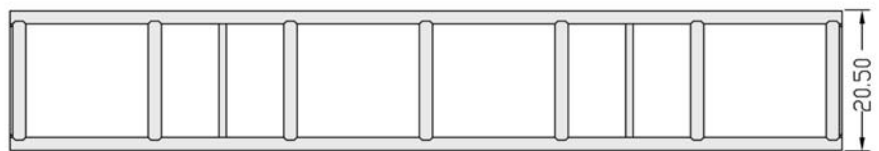
ORDERING INFORMATION

Item No.	Dimensions	Weight
9-02-120	20.5" x 20.5" x 10'	85 lbs.
9-02-096	20.5" x 20.5" x 8'	77 lbs.
9-02-060	20.5" x 20.5" x 5'	58 lbs.
9-02-030	20.5" x 20.5" x 2.5'	39 lbs.
9-02-002	2-Way Corner	51 lbs.
9-02-004	4-Way Corner	51 lbs.
9-02-005	5-Way Corner	51 lbs.

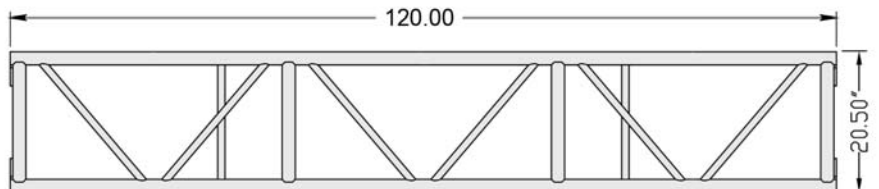


Front View

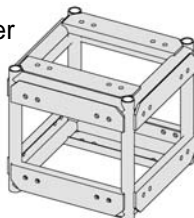
Top View



Side View



Standard Corner



Custom Corner

