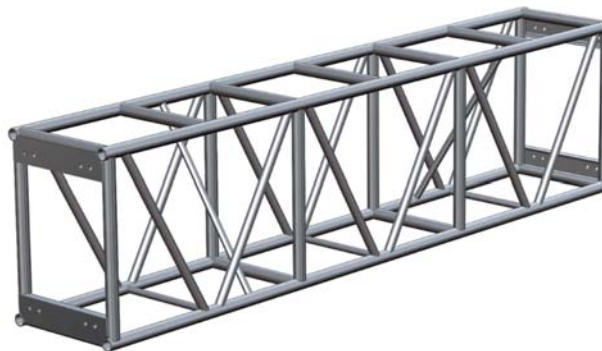




FEATURES

- Highly Polished Aluminum Tubing
- 1.9" OD 6061-T6 Aluminum Tube Schd #80
- 0.200" Wall Thickness
- 1.375" OD Aluminum Bracing
- Fabricated By Certified Welders
- Custom Lengths & Corners Available
- Available With Steel Spigots
- Powder Coating Available

This heavy duty truss is for those projects with ever increasing load and distance requirements. The truss is plated and connected with included 5/8" grade 8 bolts as standard and can be combined with GS Towers and suitable sleeve blocks to create a roof system perimeter or LED screen support structure. This truss can be supplied with casters. The main chords are 1-1/2" schedule 80, 1.9" OD 6061-T6 aluminum and the diagonals are 1-3/8" OD tube with 0.125" wall.



PLATED ALLOWABLE LOAD DATA

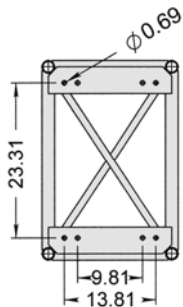
SPAN (ft.)	UNIFORMLY DISTRIBUTED LOAD			CENTER POINT LOAD	
	LOAD (#/ft.)	LOAD (#)	MAX. DEFL. (in.)	LOAD (#)	MAX. DEFL. (in.)
10	1100	11000	0.029	8000	0.034
20	300	6000	0.130	3700	0.130
30	190	5700	0.430	2250	0.279
40	120	4800	0.870	2100	0.636
50	60	3000	1.150	1700	1.061
60	36	2160	1.600	1200	1.430

Connection: 5/8" Dia. x 2" Grade 8 Bolts

Weight Load Certified By Structural Engineer ****SINGLE USE****

ORDERING INFORMATION

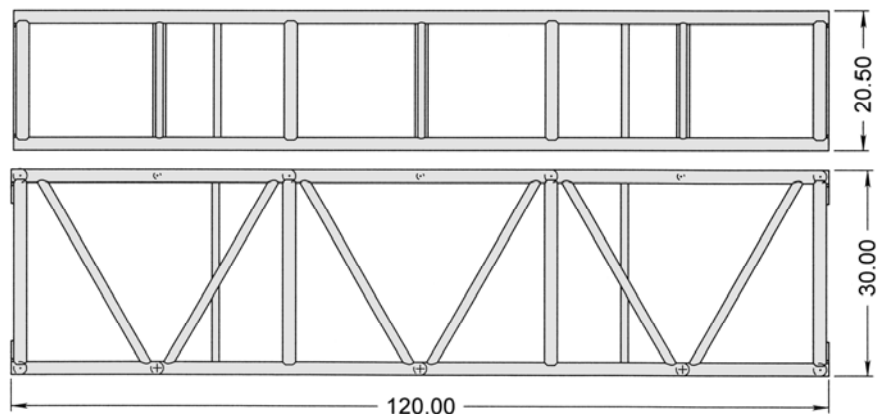
Item No.	Dimensions	Weight
9-03-120	20.5" x 30" x 10'	90 lbs.
9-03-096	20.5" x 30" x 8'	80 lbs.
9-03-060	20.5" x 30" x 5'	70 lbs.
9-03-030	20.5" x 30" x 2.5'	60 lbs. est
9-03-002	2-Way Corner	55 lbs.
9-03-004	4-Way Corner	60 lbs.



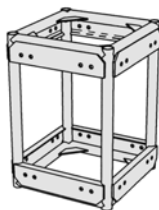
Front View

Top View

Side View



Standard Corner



Custom Corner

