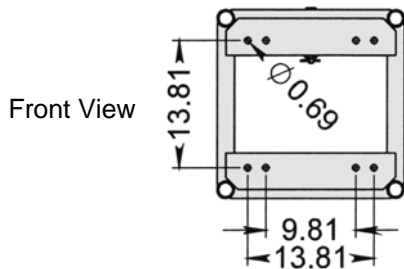
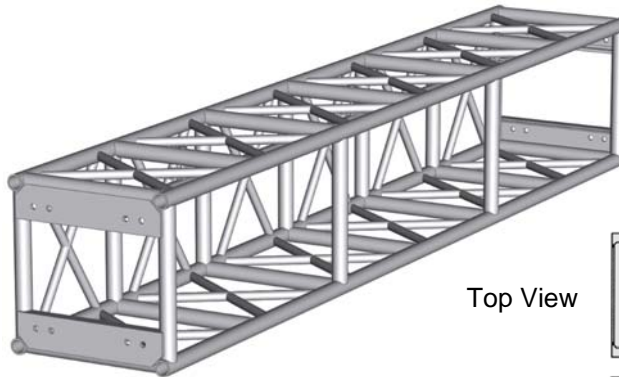




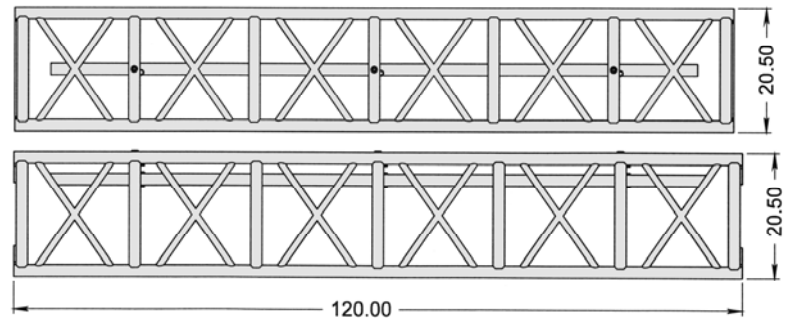
### BASKETBALL TRUSS FEATURES

- Highly Polished Aluminum Tubing
- 1.9" OD 6061-T6 Aluminum Tube Schd #40
- 0.145" Wall Thickness
- 1.05" OD Aluminum Bracing
- Fabricated By Certified Welders
- Custom Lengths & Corners Available
- Powder Coating Available
- 5/8" Grade 8 Bolts Included



Top View

Side View



#### PLATED ESTIMATED LOAD DATA

SPAN (ft.)	UNIFORMLY DISTRIBUTED LOAD			CENTER POINT LOAD	
	LOAD (#/ft.)	LOAD (#)	MAX. DEFL. (in.)	LOAD (#)	MAX. DEFL. (in.)
10	640	6400	0.13	5600	
20	280	5600	0.63	3450	
30	89.3	2680	1.68	1635	
40	40	1600	2.60	920	

Connection: 5/8" Dia. x 2" Grade 8 Bolts

### ORDERING INFORMATION

Item No.	Dimensions	Weight
9-05-120	20.5" x 20.5" x 10'	100 lbs.

### SPIGOTED CATWALK TRUSS FEATURES

- Highly Polished Aluminum Tubing
- 1-1/2" OD 6061-T6 Aluminum Tube Schd #80
- 1-3/8" OD Aluminum Bracing
- 3/16" Thick 3003-H22 Aluminum Diamond Floor Plate
- Attached Light Bar
- Steel Spigots and Pins



#### PLATED ALLOWABLE LOAD DATA

SPAN (ft.)	UNIFORMLY DISTRIBUTED LOAD			CENTER POINT LOAD	
	LOAD (#/ft.)	LOAD (#)	MAX. DEFL. (in.)	LOAD (#)	MAX. DEFL. (in.)
10	1220	12200	0.07	10800	0.11
20	600	12000	0.22	10000	0.34
30	360	10800	0.48	8200	0.66
40	230	9200	0.84	6040	0.99
50	140	7000	1.20	4580	1.40
60	92	5520	1.64	3000	1.60

Connection: Steel Spigots and 3/4" x 2-1/2" Clevis Pins

### ORDERING INFORMATION

Item No.	Dimensions	Weight
13-09-120	26" x 30" x 120"	130 lbs.
13-09-060	26" x 30" x 60"	80 lbs.